



KPIworks Client V1.00

Installation and User Guide

Adaptive Micro Systems LLC
7840 N. 86th Street
Milwaukee, WI 53224
USA

Terms of Use

Information in this document is subject to change without notice and does not represent a commitment on the part of Adaptive Micro Systems LLC. The software, which includes information contained in any databases, described in this document is furnished under a license agreement or nondisclosure agreement and may be used or copied only in accordance with the terms of the agreement. It is against the law to copy the software on any medium except as specifically allowed in the license or nondisclosure agreement. No part of this manual may be reproduced or transmitted in any form or by any means, electronic or mechanical, including photocopying and recording, for any purpose without the express written permission of Adaptive Micro Systems LLC.

This software program and associated documentation are provided in an "as is" condition. In no event shall Adaptive Micro Systems LLC, its employees, directors or agents be liable for any loss or damage whatsoever (including, but not limited to, damages for loss of business profits, business interruption, loss of business information, or other monetary loss) arising out of the use of or the inability to use this software. By installing this software on your computer system you acknowledge that you have read and understood these terms and that you accept them.

© 2003-2007 Adaptive Micro Systems LLC. All rights reserved.

Printed in Canada

Table of Contents

Terms of Use	4
Table of Contents	5
About KPIworks Client	6
Getting Started	7
Documentation Conventions	8
Using the Toolbar	8
KPIworks Client Features	9
Conceptual Overview	10
KPIworks Client	10
Installing KPIworks Client	12
System Checks and Requirements	13
Performing the Installation	14
KPIworks Client Installation	14
Starting KPIworks Client	16
Using KPIworks Client	18
Creating and Modifying Marquee Slots	19
Adding a Marquee Slot	19
Viewing and Modifying Marquee Slots	21
Insertion Tags	22
Deleting a Slot	23
Configuring Distribution List Slots	24
Adding a Distribution List Slot	24
Viewing and Modifying Distribution List Slot Details	25
Distribution List Slot Details	26
Configuring Options	27
Technical Assistance	30
Support Contracts	30
Glossary	31
APPENDIX A – Sign Properties	33
ADAPTIVE ALPHA VERSION 2 *	33
Adaptive Micro Systems*	33
NETCON Native Unit *	34
APPENDIX B – Installing KPIworks Remote Client	35
Installing and Configuring KPIworks Client	35

Chapter One

About KPIworks Client

This chapter describes the **KPIworks Client** installation and setup process. It begins with general installation requirements and concludes with procedural information about installing the client software.

Getting Started

This manual contains procedural and conceptual information about **KPIworks Client**. It was written to help Client administrators install and maintain **KPIworks Client** and also to provide them with a general knowledge of how the product works.

While it is not required that the user have any prior programming, marquee or communications experience, the user should understand basic Windows concepts. The KPIworks Client is used to maintain marquee sign displays by allowing the user to add and remove marquee messages through a simplified interface.

While this guide exists primarily as a user guide, it also contains detailed information regarding the installation of **KPIworks Client**. The installation section takes you through installation procedures, setup instructions and general requirements.

Documentation Conventions

This document contains the following documentation conventions to help you navigate through the manual and obtain a better understanding of the material.



Notes contain tips or reminders about procedural and conceptual information in the manual.



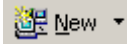




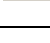
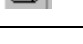



Cross-references provide you with a link to further information about the section of the document you are currently reading.

Using the Toolbar

The KPIworks toolbar allows you to quickly access menu items at the click of a button. The toolbar is located below the menu at the top of the screen.

Toolbar

	Allows you to move up one folder level
	Saves changes
	Click to create a new Marquee Client, Device, Marquee, or Distribution List
	Allows you to edit Devices, Marquees, and Distribution Lists by just selecting on the folder and clicking this icon.
	Delete the current item
	Allows you to enter in text to search for an item by Device, Marquee or Distribution List folder.
	Changes how you would like to display items in the right pane – Large icons, Small icons, List or Details
	Print out a list of Devices, Marquees or Distribution Lists
	Allows you to disable or enable devices or marquees or put them into test mode
	Launches online help file

KPIworks Client Features

KPIworks Client is the end user interface of the KPIworks Server It allows you to maintain the contents of a network of marquee signs.

Main features of KPIworks Client include:

- User-friendly maintenance of Marquee and Distribution List Slot information
- Supports up to 10 slot messages per marquee/distribution list.
- Ability to view all message details on all configured marquees
- Supported Manufacturers/Models:
- Adaptive Micro - all models

Chapter Two

Conceptual Overview

This chapter describes **KPIworks Client** in detail. It begins with a brief system overview of the product and finishes with a general description of the main components of the product.

This chapter was included to provide background information about the product itself and some of the concepts involved in marquee displays. Users who are familiar with these concepts do not need to read this chapter.

KPIworks Client

The KPIworks Client provides a single unified interface for adding and editing messages to numerous different marquee manufacturers and models that have been configured in the KPIworks Administrator.

The KPIworks Client, when refreshed, displays a list of all configured Marquees and Distribution Lists that have been added via KPIworks Administrator. The user can view, edit or delete sign details for all marquees and distribution lists. The full page of the sign where messages can be configured is referred to as a **Slot**, which contains one or more lines depending on the sign type. Each configured slot is automatically scrolled once it has been loaded into the sign. A copy of KPIworks Client is included with the **KPIworks Server** software; it will be installed automatically when you install the server. The KPIworks Client program can be accessed from the server machine, or any workstation by purchasing the **KPIworks Client** kit.

Chapter Three

Installing KPIworks Client

This chapter describes the **KPIworks Client** installation and setup process. It begins with general installation requirements and concludes with procedural information about installing the client software.

System Checks and Requirements

Before beginning the installation, it is important to determine the hardware and software requirements necessary for **KPIworks Client** to run efficiently. The following list contains decisions that must be considered before the software is installed:

Installation Considerations

System Requirements

One of:

- Microsoft Win2K (SP4+)
- Microsoft Win2K3
- Microsoft WinXP (SP1a+)
-

Applications

- KPIworks Server

Disk Space

- 32 MB

Display

- 800x600

Drivers

- TCP/IP
- MDAC v2.7 + (SP1+)

RAM

- 32 MB

Additional Requirements

- Determine which disk drive/directory your KPIworks Client software will reside on.
- Ensure you can connect to your KPIworks server, as the install will prompt for the KPIworks Server Name/IP

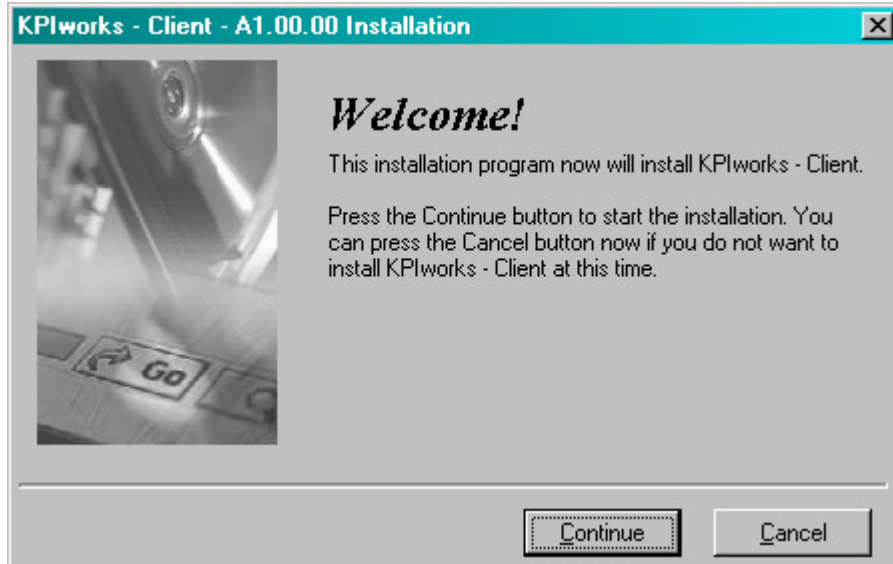
Performing the Installation

This section of the manual contains procedural information about the actual installation of **KPIworks Client**. It assumes that you have no prior knowledge of the software, but does require a basic knowledge of the Microsoft Windows environment.

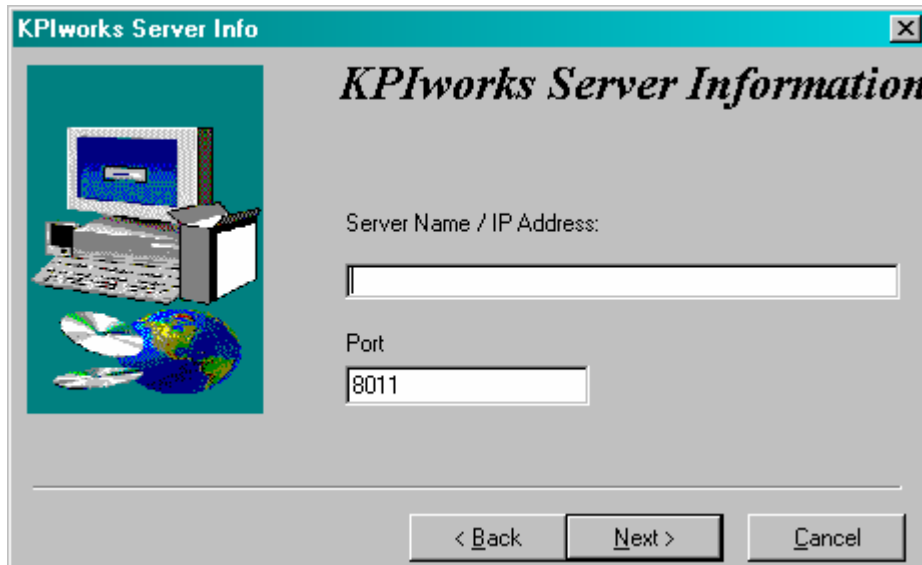
KPIworks Client Installation

To Install KPIworks Client:

1. Run SETUP.EXE from **KPIworks Client**. Select *Continue*.



2. You will be prompted for the Server Name / IP Address of your KPIworks Server. Enter the port number that you will be connecting to in the *Port:* field. The default value is 8011 but may be edited if required.



3. Select the Destination Directory and choose Finish.



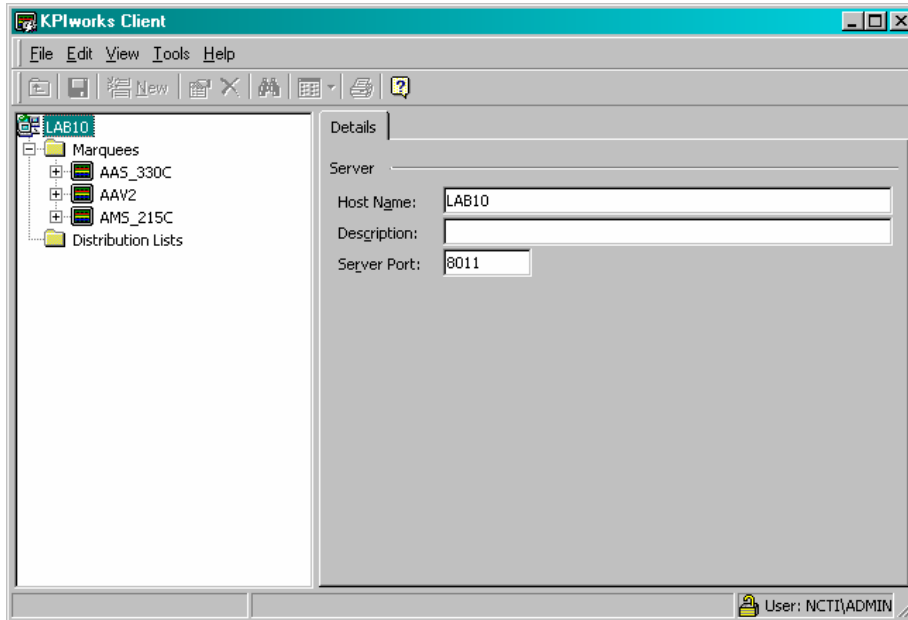
 The computer must be restarted before the **KPIworks Client** can be configured or operated. After restarting Windows, select **Start – Programs – KPIworks – Client** – to configure your KPIworks

Starting KPIworks Client

To start KPIworks Client:

1. From the **Start** menu, select **Programs - KPIworks – Client – KPIworks Client**
The first time you start the Administrator the following screen appears. A list of available marquees will be displayed in the tree view. These are marquees that have been configured in KPIworks Administrator.

KPIworks Client



2. If your administrator has enabled security in Marquee Manager Client, you will be prompted for a User ID/password and a valid Domain name before you can access Marquee Manager Client.



Chapter Four

Using KPIworks Client

The **KPIworks Client** user interface conveniently displays all information in a tree view that when expanded shows the current sign default message or the current active message of the sign. It includes a Marquees folder and a Distribution List folder that display already configured Marquees and Distribution Lists.

This chapter contains procedural information about using **KPIworks Client**. It begins with an overview of the functionality of KPIworks Client and concludes with procedural information about performing everyday client tasks.

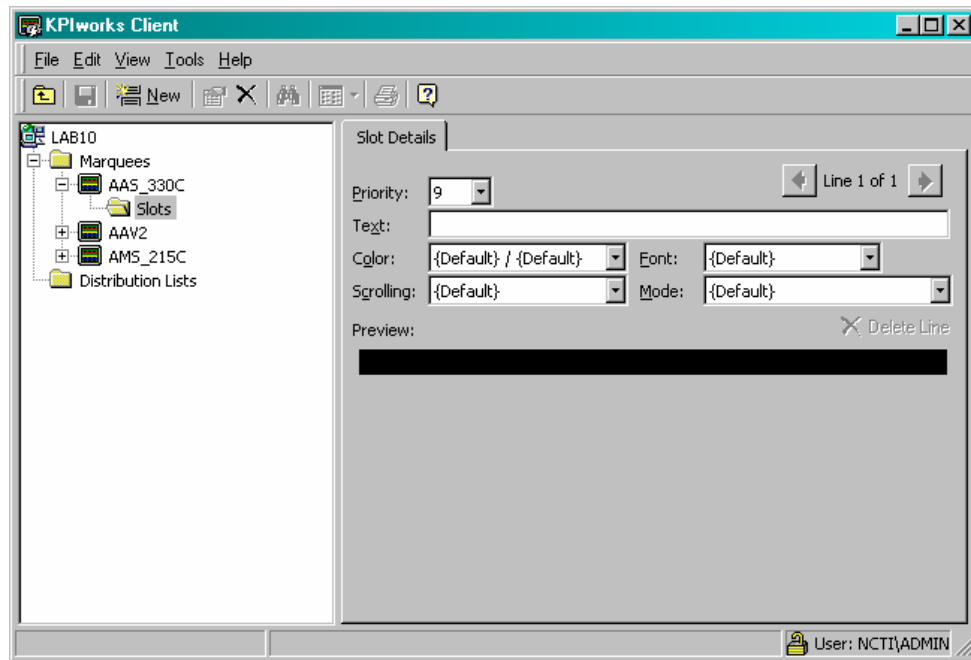
Creating and Modifying Marquee Slots

The Slots folder allows you to add and maintain all marquee text messages and display properties of these messages.

Adding a Marquee Slot

To add a slot to a marquee:

1. From the tree view, select the marquee that you would like to add a message to. Right click on *Slots* in the tree view and select **New Slot** or select the *Slots* folder and click the **New** icon in the toolbar. The following screen is displayed:



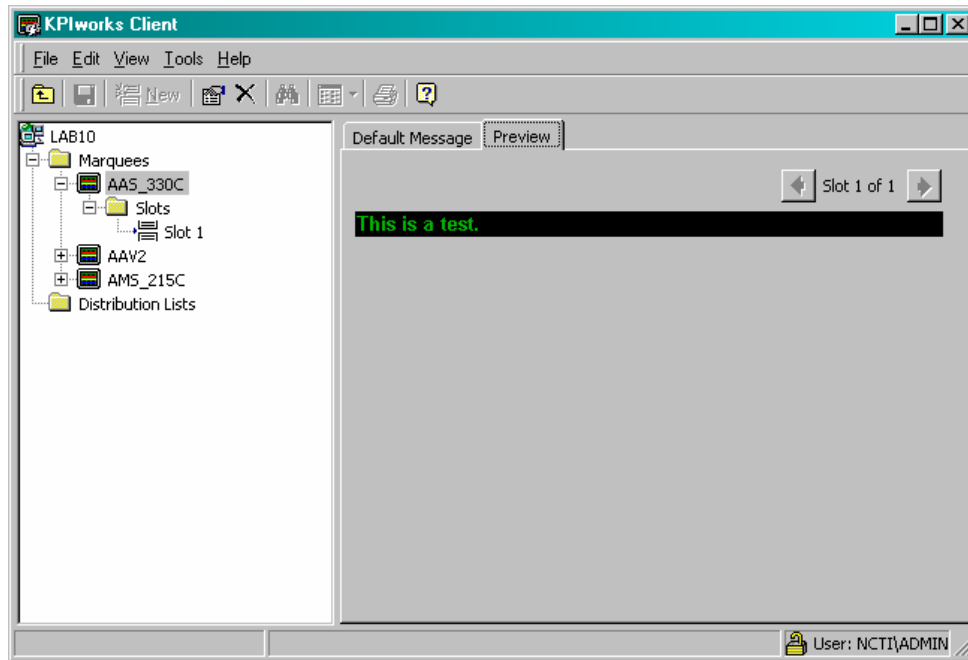
2. Select the priority of the message. This determines the order that messages sent to the sign will be displayed with. High priority messages have a priority of one and low priority message will be a priority of nine. Default Priority is set to nine.
3. Enter in a Text message that you would like displayed for each line of the selected sign.

 *Sign properties in the drop down menus will automatically be limited to the sign capabilities.*

4. Select the Color, Font, Scrolling and Mode options from the drop down lists.

The Preview reflects what is currently on the marquee. It will display any slots, if available, or display the default message that was configured in Marquee Manager Administrator.

The Preview is only an approximation of the exact marquee contents. All textual data will be correct but slot order, font, pixel height etc. may not match exactly.



5. Click the **Save** icon to save your new Slot details.

If the number of slots exceeds the queue size configured on that marquee in KPIworks Administrator, the message will be submitted and will wait until an available slot is available or a match is found on the priority threshold set for that marquee.

i.e. If queue size is set to five and greater than five slots have been added in KPIworks Client, those matching the priority threshold set on that marquee will be displayed. So if priority threshold is set to 3 on that marquee, then only those slots with a priority of 3 or higher will be displayed. The two remaining slots will be displayed when these higher priority slots have been cleared.

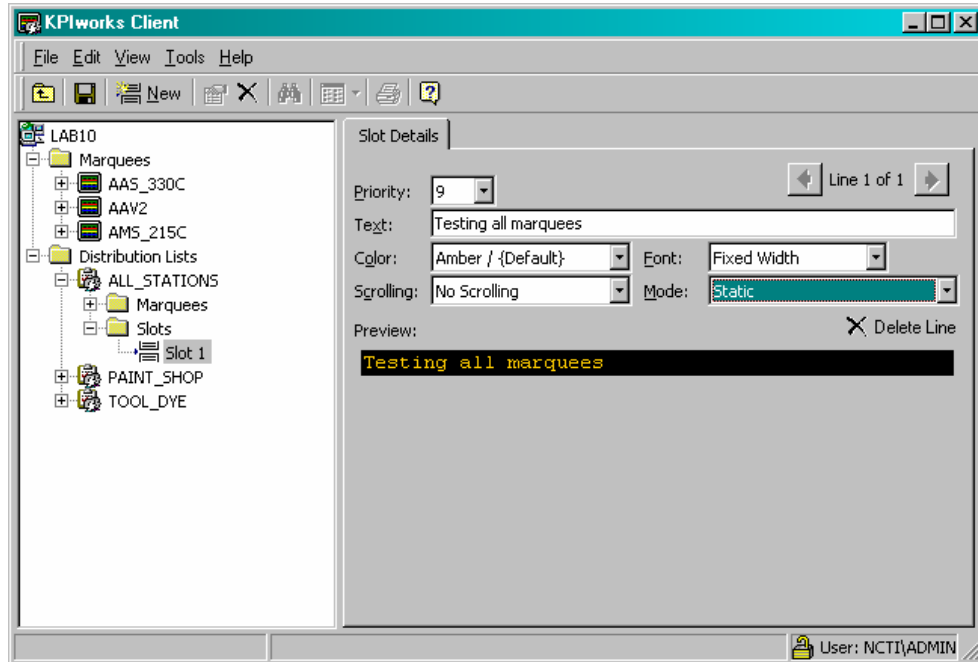
Any marquees that have an unknown display type will show in the tree view with a red X through the Marquee icon.

Viewing and Modifying Marquee Slots

To view or modify slot information:

1. On the *Marquees* folder, select the sign that you wish to change. Click the *Slots* folder then select the slot that you wish to view or modify.

KPIworks Client



The current message and properties for the marquee are displayed.

2. Click on a field to edit the slot information. Use the advance arrows at the top of the Text message to select the line you would like to edit.
3. The entire line may be deleted by simply selecting the Line and clicking the **Delete Line** button.
4. Click the **Save** icon to save your changes.

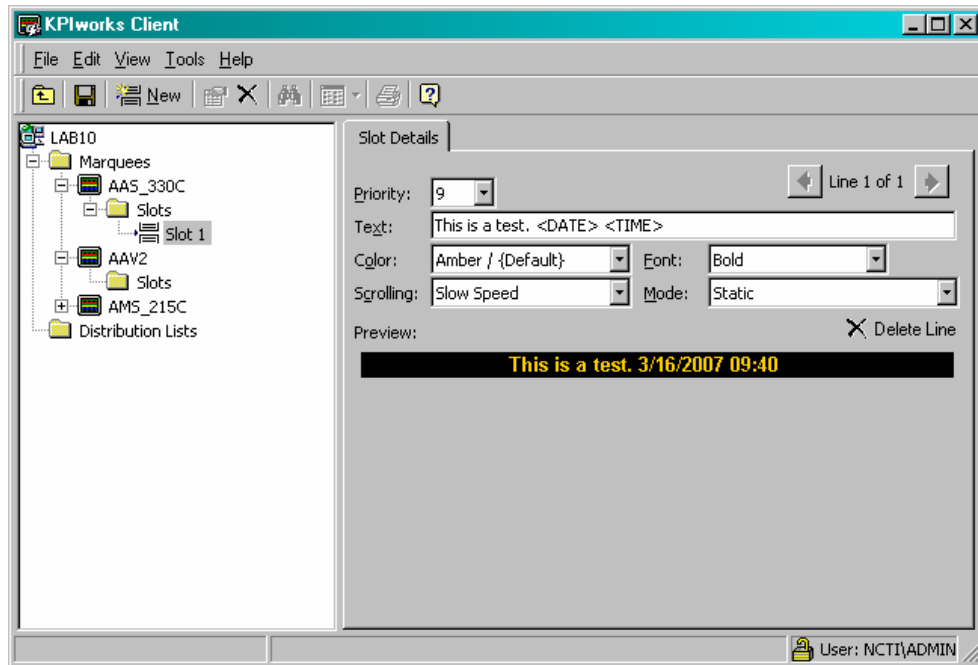
Insertion Tags

KPIworks Client allows for additional tags to be added to the *Text* field of the Slot configuration.

To add an insertion tag:

1. Select the line of the slot you wish to add the insertion tag to. The tags available at this time are <TIME> and <DATE>. The insertion tags must be included in brackets and must be all upper case.

Insertion Tags




Deleting a Slot

Entire Slot details may be removed from the marquee so they are no longer displayed.

To delete a slot:

1. Select the slot you want to delete from the tree view.
2. Click the **Delete** icon in the toolbar to remove the slot from the list or right click on the slot you wish to remove and select **Delete Slot**.
3. Click **Yes** to confirm the deletion. The slot will now be removed from the list.

 *Once a slot has been removed, the only way to restore it is to add it back into KPIworks Client.*

Configuring Distribution List Slots

The *Distribution Lists* folder displays a list of all distribution lists that have been configured in KPIworks Administrator. This allows the same message to be sent to multiple marquees at the same time.

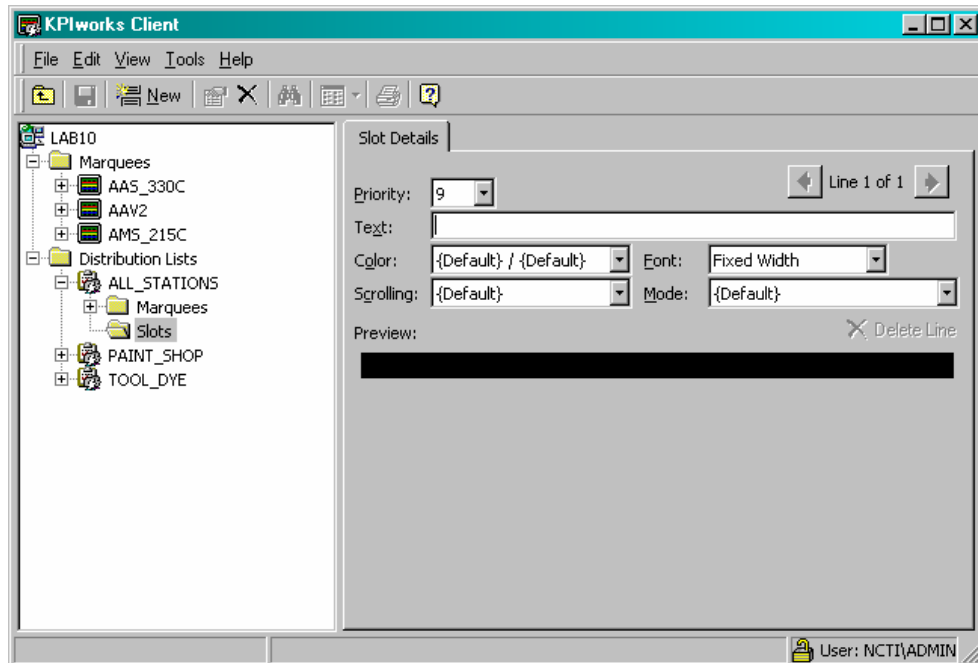
Adding a Distribution List Slot

KPIworks Client applications provide the ability to compose messages and send them to a marquee's distribution list.

To add a distribution list Slot:

1. Click on the *Distribution Lists* folder and select the distribution list you would like to configure a slot for. Expand the tree view for this sign and select the *Slots* or *Tunes* folder. Right click and select **New Slot** or **New Tune** click the **New** icon in the toolbar. The following screen is displayed:

KPIworks Client



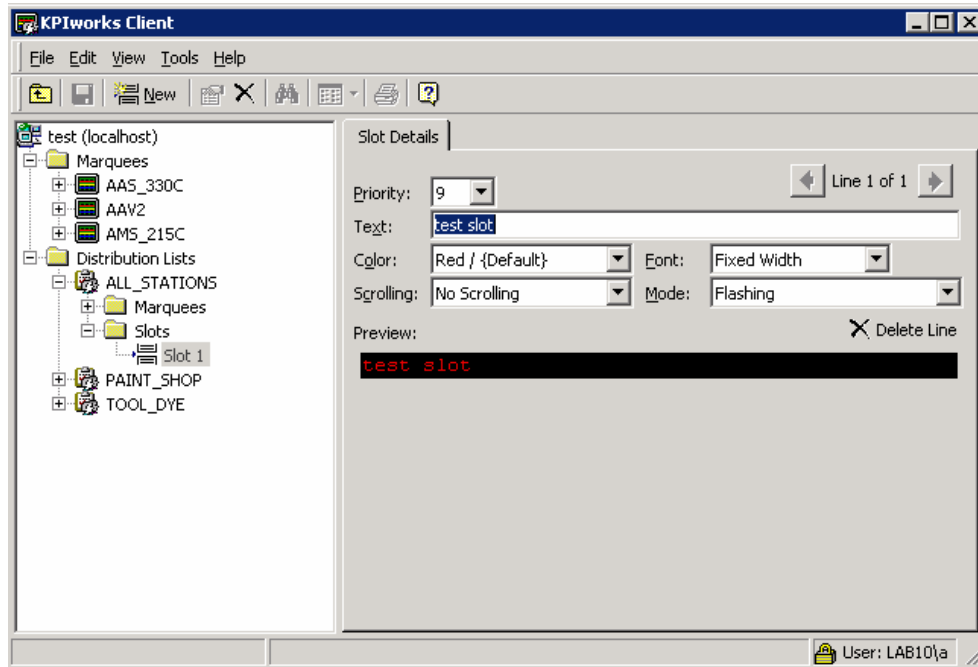
2. Enter in a Text message that you would like displayed for each line of the selected sign.
3. Select the Color, Font, Scrolling and Mode options from the drop down lists.
4. Click the **Save** icon to save your new Distribution List Slot details.

Viewing and Modifying Distribution List Slot Details

To view or modify distribution list slot information:

1. On the *Distribution Lists* folder, select the distribution list that you wish to change. Click the *Slots* or *Tunes* folder then select the slot that you wish to view or modify.

KPIworks Client



The current message and properties for the selected sign are displayed.

2. Click on a field to edit the slot information. Use the advance at the top of the Text message to select the line to edit.
3. The entire line may be deleted by simply selecting the Line and clicking the **Delete Line** button.
4. Click the **Save** icon to save any changes..

Distribution List Slot Details

Entire slot details may be removed from the marquee so they are no longer displayed.

To delete a distribution list slot:

1. Select the slot you want to delete from the tree view.
2. Click the **Delete** icon in the toolbar to remove the slot from the list or right click on the slot you wish to remove and select **Delete Slot**.
3. Click **Yes** to confirm the deletion. The slot will now be removed from the list.



Once a slot has been removed, the only way to restore it is to add it back into KPIworks Client.

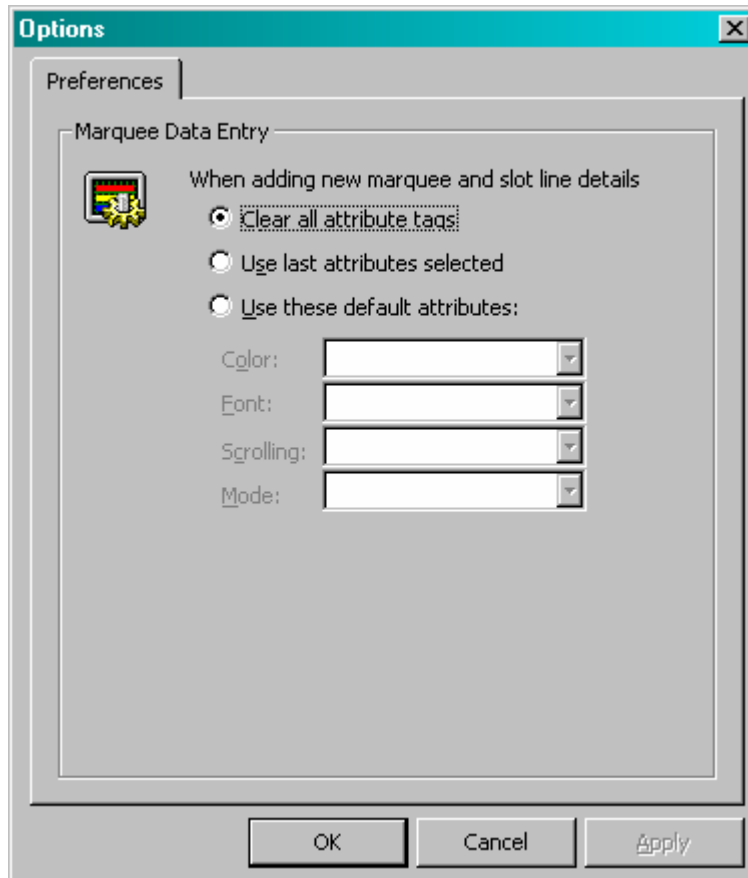
Configuring Options

The Options menu allows users to set KPIworks Client details.

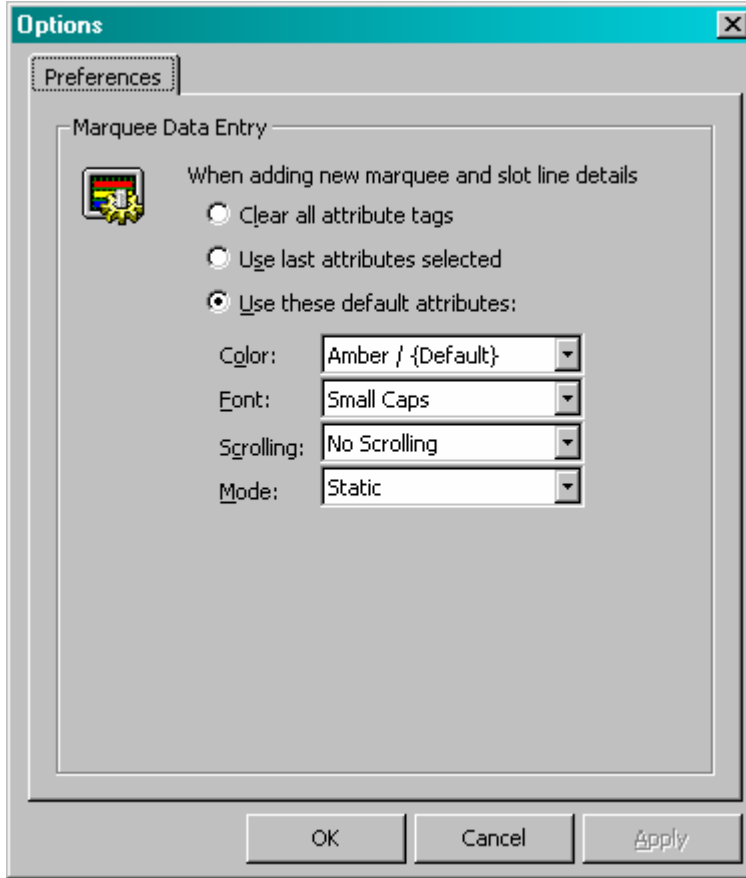
To configure Client Options:


1. Click on the *Tools* menu, then select **Options**. The following screen will appear:

KPIworks Client
Options



2. By checking "Use these default attributes", these options allow the user to determine the default attributes to appear when new Slots are being configured, so these do not have to be selected every time slot details are configured.



 *If the default properties selected are not part of the sign's capabilities, these fields will be blank to allow the user to select the correct properties from the drop down menus.*

Chapter Five

Technical Assistance

Support Contracts

You may purchase a support contract for *KPIworks* Client. Various levels of support are available. View the KPIworks web site (www.KPIworks.com/support <<http://www.KPIworks.com/support>>) and submit an inquiry for the product you are using.

For all support related issues, please provide the version of the software that you are running. This may be verified by browsing your Start menu, Programs, then selecting the application in question (i.e. *KPIworks*\Client), then selecting Version Info. This will provide the install kit version that is currently running.

Help Desk

To reach our help desk please use one of the following methods:

Telephone: +1.800.558.7022 x519

Fax: +1.414.357.2029

Web: www.KPIworks.com <<http://www.KPIworks.com/support>> - Customer Care

E-Mail: support@KPIworks.com <<mailto:support@KPIworks.com>>

Please have your version information and support contract or product license key ready before calling or include it in your correspondence. Support is free for product trials and for the first 30 days of product ownership. To view your product version select Start – Programs – *KPIworks* – Client – Version Info.

Glossary

Administrator

Typically a GUI application, this component facilitates configuration and monitoring of a Client engine. If changes are made to the Client configuration the administrator notifies the engine to reload its running configuration either automatically or on user demand. An example of an administrator component is *FirstPAGE* Administrator.

This administrator allows you to maintain the *FirstPAGE* Client's engine configuration.

Administrator Kit

An administrator kit contains the product's administration component only. After installing this kit on a workstation you may utilize any of the features of the Administrator component.

Client

A client component utilizes the facilities of a standard NETCON Client. Typically a GUI application, this component provides a user-friendly interface of the available services offered by the Client engine. An example of a client tool would be *FirstPAGE* Client, which presents the user with a list of known messaging destinations and allows them to send messages to one or more destinations.

Default Message

The message that has been configured in KPIworks Administrator as the default., should the sign be cleared of all slots.

Distribution List

A KPIworks Client distribution list is a collection of marquees, which can be sent a message with a single transaction. Similar to an e-mail distribution list, a client which initiates a transaction with a distribution list will automatically send the same message to all associated marquees.

DSN

A DSN, Data Source Name, is the name assigned to an ODBC driver and configuration information that allows an ODBC enabled application to connect to a data source.

Engine

An engine component implements a unified interface to a set of common, related protocols. The engine provides services to clients and gateways such that a common interface may be used to manipulate many different types of devices. Engines are administered via Administrator components and are utilized by clients, gateways or use written components.

Marquee

A sign display that serves as a visualization communication tool, providing the means to display time, date and message text such as production counts, and what areas of a plant are experiencing problems.

Priority Threshold

The importance or priority that can be placed on each message sent to the marquee sign, with one being the highest priority and nine being the lowest priority.

Queue Size

The number of live messages that will be displayed on the marquee at one time.

Client Kit

A Client kit typically contains the Client engine and administrator components. In some cases a client component is also included with this kit. The Client kit is usually installed on a centralized host and is utilized by one or more clients or gateways. An example of a Client kit is *FirstPAGE* Client. This kit contains the *FirstPAGE* engine, administrator and client.

Template

A user formatted guide or page of configured marquees, allowing you to display a page at any given time without the need to customize each marquee.

APPENDIX A – Sign Properties

ADAPTIVE ALPHA VERSION 2 *

Model	Color	Font	Scrolling	Flashing	Notes
BIGDOT 13Char	Tri-color	Double Height	✓	✓	Supports Rollup
BIGDOT 26Char	Tri-color	Small, Fixed Width, Bold	✓	✓	Supports Rollup

Adaptive Micro Systems*

Model	Color	Font	Scrolling	Flashing	Notes
ALL	Tri-color	Small, Bold, Fixed Width	✓	✓	
Beta-Brite	Tri-color	Small, Bold, Fixed Width	✓	✓	
BIGDOT	Tri-color	Small, Bold, Fixed Width	✓	✓	
BIGDOT_ 26Char	Tri-color	Small, Bold, Fixed Width	✓	✓	
PPD		Small, Bold, Fixed Width	✓	✓	Red and green models
215	Tri-color	Small, Bold, Fixed Width	✓	✓	
215C	Tri-color	Small, Bold, Fixed Width	✓	✓	
320C	Tri-color	Small, Bold, Fixed Width	✓	✓	
330C	Tri-color	Small, Bold, Fixed Width	✓	✓	
4080C	Tri-color	Small, Bold, Fixed Width	✓	✓	
4120C	Tri-color	Small, Bold, Fixed Width	✓	✓	
4120R	Red	Small, Bold, Fixed Width	✓	✓	
4160C	Tri-color	Small, Bold, Fixed Width	✓	✓	
4160R	Red	Small, Bold, Fixed Width	✓	✓	
4200C	Tri-color	Small, Bold, Fixed Width	✓	✓	
4200R	Red	Small, Bold, Fixed Width	✓	✓	
4240C	Tri-color	Small, Bold, Fixed Width	✓	✓	
4240R	Red	Small, Bold, Fixed Width	✓	✓	
7120	Tri-color	Small, Bold, Fixed Width	✓	✓	

7160	Tri-color	Small, Bold, Fixed Width	✓	✓	
7200	Tri-color	Small, Bold, Fixed Width	✓	✓	
7200_4Line	Tri-color	Small Caps	✓	✓	
9120	Tri-color	Small, Bold, Fixed Width	✓	✓	
9160	Tri-color	Small, Bold, Fixed Width	✓	✓	
9200	Tri-color	Small, Bold, Fixed Width	✓	✓	
9240	Tri-color	Small, Bold, Fixed Width	✓	✓	

NETCON Native Unit *

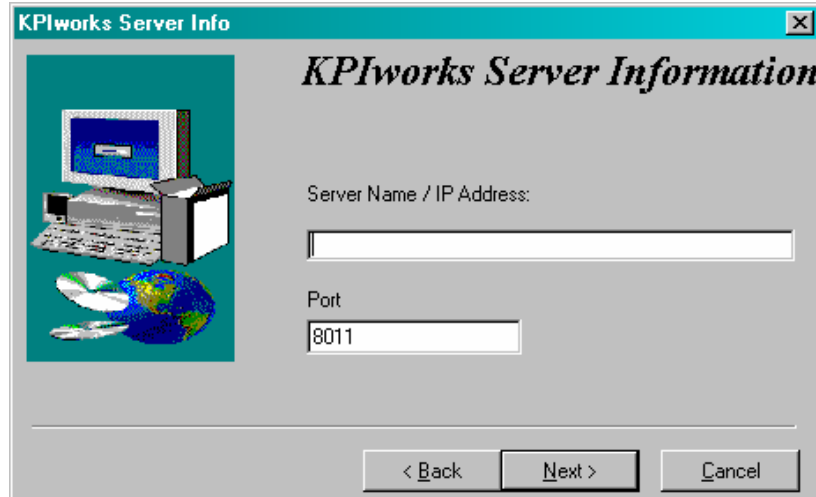
Model	Color	Font	Scrolling	Flashing	Notes
Clock	N/A	N/A	x	x	Displays time only
Counter	Red	Fixed Width	x	x	- Numeric only - Max. 8 digits - # of Characters can be set on the Options tab in Marquee Administrator
Marquee	Multi-Color	Fixed Width	✓	✓	- Supports Rollup - # of Lines and Characters can be set on the Options tab in Marquee Administrator
Sounder	N/A	N/A	N/A	N/A	255 Tunes

APPENDIX B – Installing KPIworks Remote Client

Installing and Configuring KPIworks Client

Users can install KPIworks Client to run on a machine other than the KPIworks Server. This is referred to as Remote Client and allows the user to send messages to marquees that have been configured on the KPIworks Server.

1. The Client kit prompts for KPIworks Server information.



2. Enter the Server Name or IP Address of your KPIworks Server. Port defaults to 8011. Be sure to share the directory on the KPIworks Server where the KPIworks Server.mdb is located.
3. You will now see a list of marquee displays that have been configured in KPIworks Administrator.